



Custom Printed Die-cut Notes

October 23, 2001

Concept Template

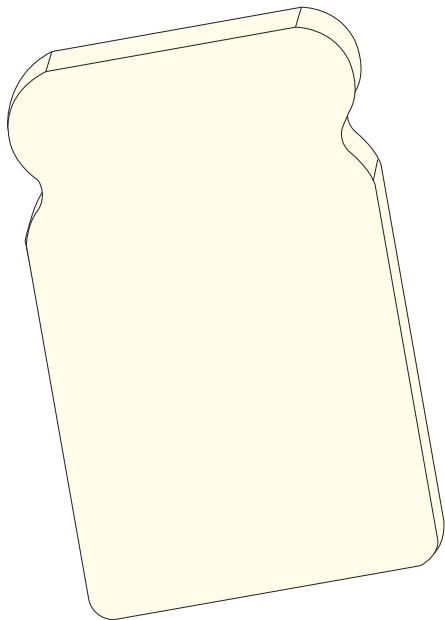
Additional concept templates available at www.3M.com/templates

#49A Bread Die-cut pad — no stock art

MUST PRINT BEFORE USING

“When printing this template, de-select “Fit to Page” to help ensure template prints out at actual size.

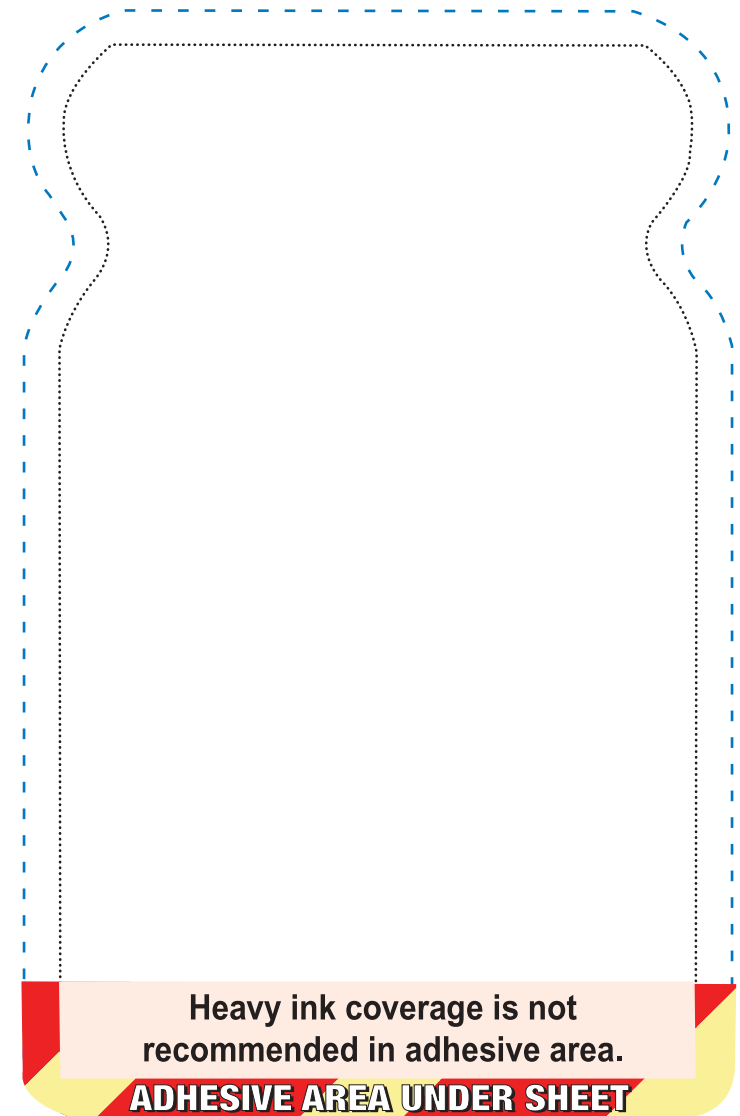
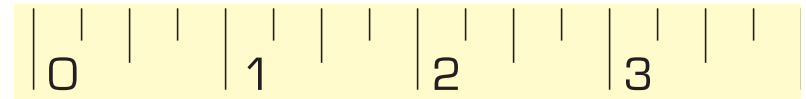
Concept templates are paper documents that are used by customers and sales professionals to create "cut & tape mock-ups" in anticipation of an order. For electronic art preparation, production templates are available at www.3M.com/templates.



SCALE = 100%

- Approximate imprint area: 3-5/16" x 5-3/8"
- Imprint area is in white space in bread area

ACTUAL SIZE RULER - Please check before using



Heavy ink coverage is not recommended in adhesive area.

ADHESIVE AREA UNDER SHEET



Custom Printed Die-cut Notes

October 23, 2001

Concept Template

Additional concept templates available at www.3M.com/templates

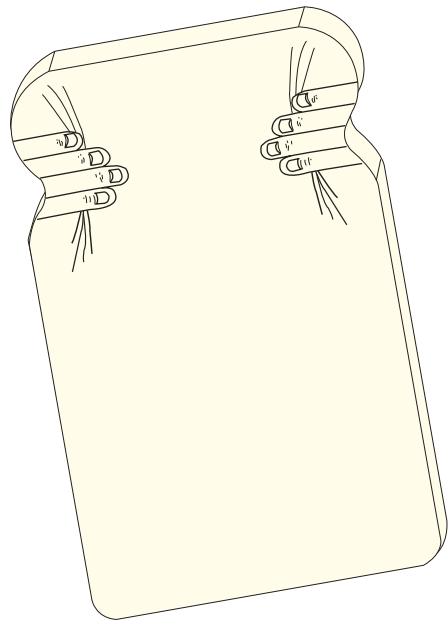
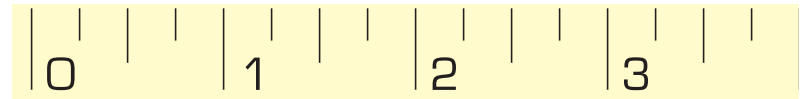
#49B Bread Die-cut pad — with stock art

MUST PRINT BEFORE USING

“When printing this template, de-select “Fit to Page” to help ensure template prints out at actual size.

Concept templates are paper documents that are used by customers and sales professionals to create "cut & tape mock-ups" in anticipation of an order. For electronic art preparation, production templates are available at www.3M.com/templates.

ACTUAL SIZE RULER - Please check before using

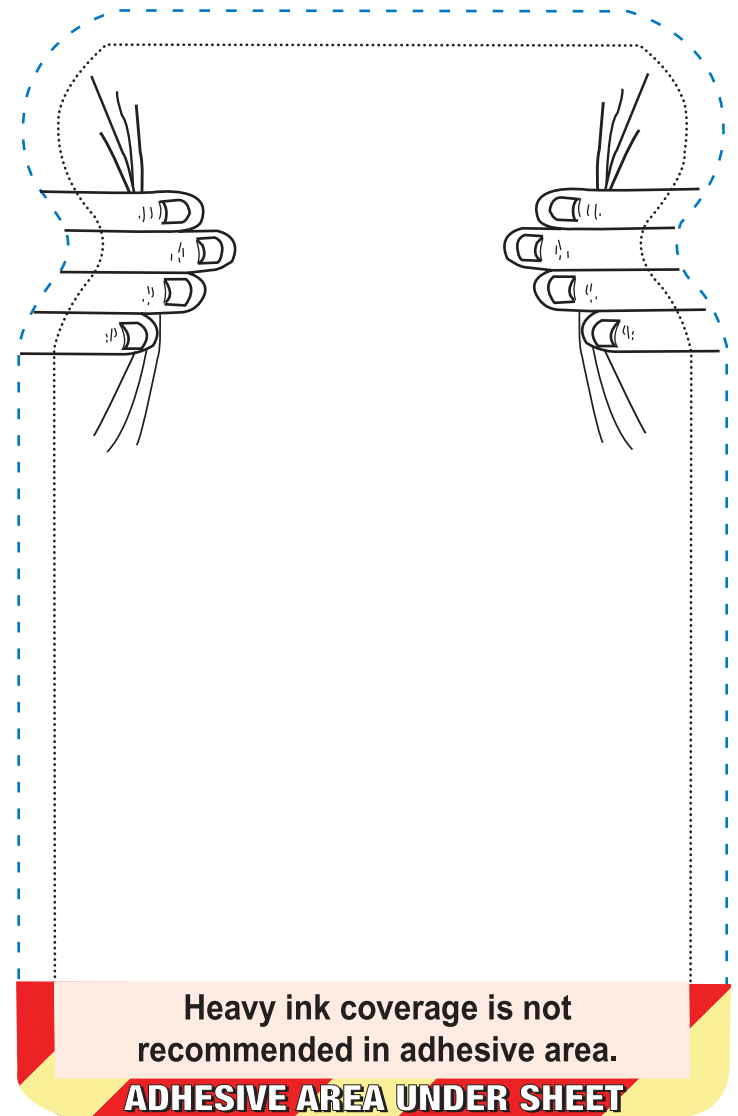


SCALE = 100%

- Approximate imprint area: 3-5/16" x 5-3/8"
- Imprint area is in white space in bread area

Stock Art #49B

Stock art shown in black. Actual product will be printed in color(s) specified in the purchase order.



Heavy ink coverage is not recommended in adhesive area.

ADHESIVE AREA UNDER SHEET